

TRI-N ^{7th Annual} BULL SALE CHAROLAIS

Featuring Manitoba's Largest Sale Offering of Red Factor Charolais

Offering 44 Yearling Red, White and Tan Charolais Bulls



A bull to suit everyone's budget

MONDAY, MARCH 21, 2022 - 2 PM

~ on the farm - Lenore, MB ~



Merv, Joanne & Jesse

7th Annual Tri-N Charolais Farms Bull Sale!

Welcome to the 7th Annual TRI-N Charolais Farms bull sale!

The number says 7 but its our 37th year in business!

Every day on this earth one can be thankful for your blessings. I'm truly blessed to have my dad (Mervin) as a mentor in this business. At a young age he got me hooked by taking me to watch our bulls sell at the Yellowhead and Douglas Bull Test Stations. This was where he taught me what type of cattle work for us and our customers and "to breed for females and the bulls will come."

To all of you, our customers and friends (far and wide), I'd like to thank you all for the strong patronage throughout the years. It's you that keeps us in business. There's a few of you that have been customers of ours for over 30 years! It is very humbling. If you are new, I always enjoy meeting you all and we hope our cattle work well for you. Be sure to introduce yourself sale day.

For those of you who don't know, my mom and dad are slowing down and we are transitioning our family farm. Our bred heifers and first calf heifers were marketed in December in "The Changing of the Guard" Female Sale. I have purchased dads purebred cows 3 years and up and the heifer calves to carry on with the tradition.

We are continuing with our annual bull sale and couldn't be more excited about the future! The 2023 bull sale is going to be bigger and better than ever before!

We are proud to offer you some of the most information that you will find in a bull sale catalogue to aid you in making your selection. All bulls in this sale have been **sire verified** through Quantum Genetix or the Canadian Charolais Association, some will have **Genomic 100K EPDs** (waiting on results), **full carcass data**, **homo polled** testing and the testing for the **diluter gene** in our homo red cattle. **Complete performance data** (BW, ADJ 205 and ADJ 365) is also provided. These bulls will be **semen tested** and **READY TO WORK!!**

Once again, we are excited to be working with the Jack Auction Group team as well as Andrew Releeder. We hope to see you sale day. The beef business is our business, and everyone is invited.

Thanks,
Jesse

From the Desk of Jack Auction Group

BUCKLE YOUR SEATBELTS...

2022 might be the Year of the Tiger, but, I think 2022 is going to be the Year of the Cow-Calf Producer!

Buckle your seat belts for a wild ride of high dollar cattle in the coming months, this market is looking to blast off to Mars faster than Elon Musk can build the city. Will we see \$2.80, 600-pound steers in April? 1,000-pound steers off grass at \$2.20? It could be very possible, and I hope it continues for the decades to come.

The Bulls that Tri-N raise are exactly what the business needs; Long-Bodied, Haired-Up, Rapid-Growing, Good Framed Cattle, that are High Quality, and will fit into any program, regardless if your cows are Red, White, Tan, Black, or Purple, the calves will sell extremely well!

Tri-N has been in the business a very long-time, and they wouldn't be setting records every other year, or would not have had an unbelievably successful Female Sale if people didn't believe in the cattle, and that's a fact!

Does every bull at Tri-N start at 100-Grand, absolutely not, Tri-N has built their entire program around the everyday cattlemen, yes, recently they have had some major success with breeder-type bulls that obviously attracted world-wide interest, but, they haven't forgotten about the producers that put them where they are today. Their bread and butter is making Bulls that Work for the everyday Cattlemen; from Ashern, Manitoba to Fort Worth, Texas and every place in between Tri-N Bulls get the job done, and have for a very long-time.

If you want my opinion on any of the cattle in the sale, do not hesitate to give me a call, I'll be more than happy to describe the bull I see in front of me. I am not a pedigree guru, and will never claim to be, Merv or Jesse or any of my sales team will be more than happy to chat pedigrees with anyone.

In a world where everything changes so rapidly, you want to find the things that are consistent, and one thing you can count on is Charolais and Char Cross Steers and Heifers will top almost every sale in Canada, day in and day out.

See you at ringside and Let's Have a Sale!

Brennin Jack

JACK AUCTION GROUP - 1-306-641-9285

Brennin



TRI-N ^{7th Annual} CHAROLAIS BULL SALE

MONDAY, MARCH 21, 2022 - 2 PM

~ on the farm - Lenore, MB ~

Sale Day Phones

Merv Nykoliation204-851-2290
Jesse Nykoliation204-851-3391

Sale Staff

Brennin Jack, Auctioneer306-641-9285
Buddy Prouse, Ring Staff306-269-7545
Andrew Reeleder, Ringman403-848-1260
Richard Bramley, Phone Bidding/Order Buying204-867-7511
Terry Fehr, Phone Bidding/Order Buying204-362-7830

Video Sale

Videos will be available online at www.trincharolais.com. This is a video sale so be sure to come early and go through the bulls thoroughly in the pens as they will not be coming through the sale ring.

Delivery

If you are able to bring your trailer sale day, we will deduct \$100 from the purchase price of your bull. We can deliver your bull for \$100 for up to 200 kms. Anything over 200 kms, delivery will be at cost. We will work with you for further destinations.

American Purchases

Business as usual for trade. You can still attend our sale. For those who cannot, we also have a very capable sales staff and online bidding. There have been no changes to the export of cattle. We will do all necessary health tests in a timely manner required for export. Animals will be delivered to the nearest point of entry at the seller's convenience. American Buyers will be charged an additional \$250/animal for the 1st animal and \$200/animal for each consecutive animal to cover health testing costs and delivery to the border. Exchange rates will be announced sale day at current bank rates. At the time of printing \$780 USD buys \$1000 Canadian. All animals are guaranteed exportable to the USA. If they don't pass their export tests, you don't own them!

Insurance

Insurance will be available sale day from Keystone Livestock Services, Lois McRae - 204-573-5192.

Can't make the Sale?

Just give us a call with the particulars (color, horn/poll, etc.) and we will find a bull that suits your program. Our sales staff will handle your bid in a professional manner. The sale will also be broadcast and internet bidding available on DLMS.



DNA Testing & Sire Verification

Bulls are sire verified through Quantum Genetics. We decided to test a select few for homozygous polled, homo red and for the diluter gene. Results are in the catalog. Bulls that are listed as "homozygous red non-diluters" are bulls that will only throw red or black on black cows (no greys). Other bulls in this sale may or may not carry these genes as they were not tested.

EPD info

Updated EPDs will be available sale day. Select bulls have been 100K tested and Genomic EPDS will be available sale day (waiting on results).

TRI-N Charolais Herd Health

At birth to weaning: Inforce 3, Once PHM, IN, Vitamaster, Vision 8 Somnus, Vista Once, Coccidiostat

Weaning: Vista Once, Vision 8 Somnus, Ivermectin and Deworming (oral)

Cowherd is on a full vaccination program for IBR, BVD, BRSV, PI3, and Scours.

Accommodations

Jay's Inn, Virden 204-748-2223

Comfort Inn, Virden 204-707-6020

View sale videos online



www.trincharolais.com

www.jackauctiongroup.com

TRI-N CHAROLAIS FARMS

Box 899, Lenore, MB R0M 1E0

Merv & Joanne Nykoliation
204.838.2107
C. 204-851-2290
merv1@prairie.ca

Jesse Nykoliation
204.851.3391
 @jnykoliation
 tri-n charolais farms



Jack Auction Group

Box 1284 Virden, Manitoba R0M 2C0

Office 306-299-7253

Brennin Jack 306-641-9285

info@jackauctiongroup.com

Calving Ease Scale

Look for the calving score beside each bull's pedigree for Tri-N's recommendation!

- X** Recommended for heifers or cows (Greatest calving ease)
- XX** Recommended for 2nd Calvers, smaller cows or mature cows
- XXX** Recommended for medium or large framed mature cows
- XXXX** Recommended for large framed mature cows only



*Provinces & States we have sold bulls
to the Past 7 Years!*

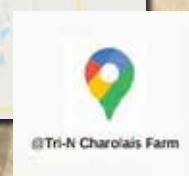
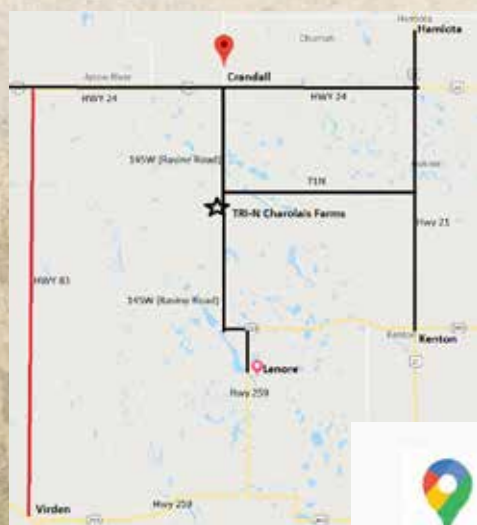
DIRECTIONS TO TRI-N CHAROLAIS FARMS:

From Crandall - 6.5 miles S on Ravine Road

From Kenton - 6 miles N on HWY 21 to 71N. West (left) on 71N to 71N/145W. Turn south(left) half mile.

From Lenore - 2.5 miles N to speed curve, exit onto gravel and take 1st left(west), 1 mile west to 145W(Ravine Road).
3.5 miles North. Yard number 70097.

Watch for signs!



A Humble Beginning

(Reprinted from "The Changing of the Guard Sale" Dec 2021)

The Nykoliatiion name is long standing and well known in the livestock industry and the Charolais breed throughout Canada and beyond for close to 50 years. The families' humble beginnings started with Beaver Creek Charolais (Len, Marilyn, Gord and Micheal Nykoliatiion and families) being the first in the 1970's. Shortly after, N7 Stock Farms (Gerald and Wendy Nykoliatiion and families) was established.

The early days consisted of attending many female production sales with Merv's brothers Len and Gerald throughout Manitoba and Saskatchewan. On one November day back in 1983, they attended the Dennis Toms Charolais Dispersal at the Virden Auction Mart.

Miss DTM 18L, a 1979 born daughter of Mr. JN Cadet 83F entered the ring (consigned by Dennis Toms of Redvers, SK). When she left, TRI-N Charolais Farms was born! The third Nykoliatiion in the purebred Charolais industry.

Today, well over 50% of the current TRI-N Charolais herd traces back to this first purchase. Cow families such as Prairie Rose, Creamsicle etc. all trace back to Miss DTM 18L. Beaver Creek Charolais were founding members of the West Man Breeders Group that were very active throughout the 70s, 80s and 90s. Through these sales Merv established his herd and later was an active consignor selling a few bulls and females in their annual bull and female sales held at the old Virden Auction Mart.

Performance testing played a large role from the beginning in the marketing of bulls for TRI-N. From the beginning bulls were entered in the Northwest (Roblin) Bull Test Station and the Manitoba (Douglas) Bull Test Station. Many top ten gaining bulls and banner bulls were consigned. In one year, TRI-N won both Roblin and Douglas Test Stations. The same was repeated with Douglas and Yellowhead.

Mervin was a founding member of the Yellowhead Bull Test Station in Neepawa and consigned every year until its ending in 2005. At this time, TRI-N consigned to the Cattlemans Classic Bull Multi-Breed Bull Sale in Virden with the other Charolais consignor Gord and Lisa Nykoliatiion of Beaver Creek Charolais.

Merv remembers distinctly when the bull TRI-N Prefix 54Y was offered for sale in the 2012 Cattlemans Classic bull sale. Back in those days there was no Facebook to promote your cattle, it was word of mouth and people face to face talking about it. When Prefix entered, the sales ring was jam packed, the alleys plugged and standing room only outside. Everyone was trying to get a look at the bull! Pretty dang exciting for little old Cattlemans Classic Virden, MB!

When the hammer finally fell Prefix went to Vikse Family Farm in Alberta and ended up being the highest priced Charolais bull in Canada that year. Interesting enough, a full sister to Prefix is the grandma of TRI-N Go North 2411H that sold this spring and ended up being the record high selling Charolais bull ever sold and bred in Manitoba history by public auction for \$80,000!

For ten years bulls were marketed through Cattlemans Classic. At this point Beaver Creek Charolais dispersed their cow herd. In 2015, TRI-N Charolais created their own bull sale at Heartland Livestock in Virden. In 2018, the bull sale was moved to the farm at Lenore, MB where it remains today.

Merv and Joanne Nykoliatiion have two daughters (Tanis and Brittni) and two sons (Jesse and Curtis).

In 1995, the family moved to the main farm on NW-25-12-25W1 after taking it over from Merv's mother (Jennie) after the passing of his father (Michael) where all 9 brother and sisters were raised.

The move went great and there were many family memories that were made. From the beginning, Tanis, Jesse and Brittni all took an active role in showing cattle in 4-H and the various Canadian Charolais Youth Association (CCYA) conferences throughout Canada.

Two CCYA projects included TRI-N Prairie Rose 401P (The beginning of the Prairie Rose cow family) and KCH Malibu 1M (the grandmother of TRI-N Malibu 72B). Both kids fell in love with the CCYA program, and the annual summer vacation was planned around the CCYA conference and shows location that year.

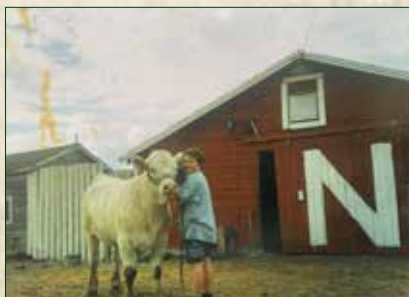
The kids are all grown up now. Tanis (Rob and grandkids Brooklyn, Ashley and Hudson Boyd) reside on a grain farm in Rapid City, Curtis (grandson Damon) lives in Basswood and Brittni (Trevor and grandkids Hunter and Parker Morris) live in Melita.

Jesse (with support of his partner Delaney) is involved in the daily affairs of the family farm and are in the process of taking it over from Merv and Joanne. He has grown his cow herd by purchasing Merv's mature cow herd and plans to continue in the industry and hosting the annual bull sale for many years to come.

This sale represents the true "Changing of the Guard" from one generation to another. Close to half a century in the making by the Nykoliatiion family.



Merv at Douglas Bull Test Station in 2001



Jesse and his 4-H Heifer



Merv & Joanne



RS SCX Jehu 233E

CE 4.8 BW -0.4 WW 62 YW 127 M 18 TM 49 *Homozygous Polled* 15 sons on offer Lots 1-15

EPDs top 1% YW, 2% WW, 4% CW, 10% REA and LMY, 15% TM and 35% BW

All the buzz! The Canadian record setting \$245,000 Charolais bull! Your only opportunity to select a son is in this sale!

In the winter of 2019, I remember getting a text from our good friends Darren and John Cook, Triple C Charolais of Steep Rock, MB. They told me they have a great bull this year and he was the best bull they have raised in the past 50 years. His dam is one of their best cows and this bull is an absolute powerhouse. He had a full brother that was used in their herd and threw a very consistent set of calves.

After seeing his sale picture, we were blown away. When we saw him in person he was even better! Dad and I brought our good friends Jack, Tyler and Jared with us to the sale to critique the bull as we really value their eye for cattle. "Powerful, big barrelled, smooth made, free moving... and look at that muzzle on that bull!" All comments not made by us but by these astute cattlemen that day.

We must agree with everyone on this one. **SCX Jehu 233E is by far the stoutest, biggest barrelled, massive white bull we have used on our ranch** the last 36 years. He has calved so well and has thrown so much performance.

From his humble beginnings at Steep Rock, MB to our ranch in Lenore to having calves born in 2023 world-wide, Jehu is sure to have a lasting impact on the Charolais breed. His story has just begun!



John Cook and Jehu reunited



Jehu Dam - SCX MISS MAGNUM 109X



Jehu's Dam at 9 years of age

THE Only sons of Jehu to sell this spring!!

Jehu sons

EPDs top 10% for YW, 15% for WW and CW, 25% for BW and TM and 30% for REA.

Leptin TT

100% interest and full possession sells!

Full sister was a high selling bred heifer to Cornerview Charolais (ON)



TRI-N ROXANNA 2421H - full sister



dam's udder



2158H

Ultrasound Data	Marbling	Backfat (mm)	REA (in2)	Weight adj REA	%Lean Meat
	4.8	7.62	15.98	1.23	63.94

2 TRI-N Kid Rock 124J

PMC816941 | NMF 124J | March 22 2021 | White, Polled XX

BW	Adj 205	Adj 365	CE	BW	WW	YW	M	TM	Gen Polled
88	871	1477	9.5	-2.1	50	103	26	51	4

SCR TRIUMPH 2135 (P)

WINN MANS LANZA 610S (P)

Sire: SCX JEHU 233E (P)

Dam: TRI-N PRAIRIE ROSE 725E (P)

SCX MISS MAGNUM 109X (P)

TRI-N-MISS MONROE 244M (P)

EPDs top 10% TM, 15% BW YW and Milk, 20% CE, 25% WW, 35% CW and Marb.

Dam was high selling bred cow to Sunshine Oak Charolais (ON)

Dam is a maternal sister to the great TRI-N Prairie Rose 401P cow (Canadas highest milk EPD female 5 years in a row (Gold Star Dam) and produced here until she was 16).

Grand dam (Gold Star Dam- produced until 15), great grandma (Gold Star Dam- produced until 14).

Ultrasound Data	Marbling	Backfat (mm)	REA (in2)	Weight adj REA	%Lean Meat
	3.8	6.67	13.71	1.15	63.08



Herdbull!

1 TRI-N Arctic Blast 2158J

PMC824983 | NYK 2158J | March 08 2021 | White, Homo Polled XX

BW	Adj 205	Adj 365	CE	BW	WW	YW	M	TM	Gen Polled
93	904	1543	6.1	-0.8	53	107	21	47	Homo

SCR TRIUMPH 2135 (P)

NCCTRUE 97B (P)

Sire: SCX JEHU 233E (P)

Dam: TMJF EARTHA 663E (P)

SCX MISS MAGNUM 109X (P)

TMJF WYNONA 254W (P)



Won't be a year of age until the day after the sale!

Monday, March 21, 2022 7

Jehu sons



EPDs top 10% WW, YW and TM, 20% BW, 30% CW and 35% CE and Milk.

100% interest and full possession sells!

Full sister to dam sold to Zhender Waage Partnership (MN).

Dam (4 years), grand dam (8 years), great grand dam (11 years) are still in production. We lost his great great grand dam (85T) at 14 years age last year after never missing a calving.



TRI-N CREAMSICLE 972G - full sister to dam



TRI-N PRAIRIE ROSE 64H - 3/4 sister

3 TRI-N Arctic Wolf 52J

PMC824923 | NMF 52J | February 22 2021 | White, Homo Polled XX

BW	Adj 205	Adj 365	CE	BW	WW	YW	M	TM	Gen Polled
92	896	1507	7.9	-1.6	56	106	23	54	Homo

SCR TRIUMPH 2135 (P)

SCX THRILLER 89B (P)

Sire: SCX JEHU 233E (P)

Dam: TRI-N CREAMSICLE 815F (P)

SCX MISS MAGNUM 109X (P)

TRI-N CREAMSICLE 431B (P)

Ultrasound Data	Marbling	Backfat (mm)	REA (in2)	Weight adj REA	%Lean Meat
	4.4	8.59	15.51	1.24	62.57



TRI-N BROOKS 34H - Full Brother

4 TRI-N Great White 68J

PMC824921 | NMF 68J | February 27 2021 | White, Homo Polled XX

BW	Adj 205	Adj 365	CE	BW	WW	YW	M	TM	Gen Polled
90	898	1435	2.7	1.2	54	110	20	48	Homo

SCR TRIUMPH 2135 (P)

GRANT'S SYNERGY 41X (P)

Sire: SCX JEHU 233E (P)

Dam: MISS LOUBER SYNERGY 850B (P)

SCX MISS MAGNUM 109X (P)

LOUB MISS SANCHEZ 812W (P)

EPDs top 10% YW CW, 15% WW and REA and 20% TM Marb.

Pictured- Full brother sold for \$25,000 to Zhender Waage Partnership, MN USA.

Dam (8 years) and grand dam (13 years) are still producing.

Ranked #1 for REA (actual)

Ultrasound Data	Marbling	Backfat (mm)	REA (in2)	Weight adj REA	%Lean Meat
	4.5	6.69	17.32	1.29	65.98

EPDs top 5% YW, 10% WW, 15% REA, 25% BW CW Marb, 30% TM and 40% CE

Maternal sister sold to Triple C Charolais (MB)

-Dam was high selling heifer calf at Tee M Jay Dispersal. These Tee M Jay cows work!



TRI-N EDREA 9432G - Maternal Sister

5 TRI-N *Snow Fall* 2116J

PMC825325 | NYK 2116J | February 13 2021 | White, Homo Polled XX

BW	Adj 205	Adj 365	CE	BW	WW	YW	M	TM	Gen Polled
92	811	1474	7.3	-0.9	56	112	19	46	Homo

SCR TRIUMPH 2135 (P)

MERIT ROUNDUP 9508W (P)

Sire: SCX JEHU 233E (P)

Dam: TMJF EDREA 626E (P)

SCX MISS MAGNUM 109X (P)

TMJF ABIGAIL 392A (P)

Ultrasound Data	Marbling	Backfat (mm)	REA (in2)	Weight adj REA	%Lean Meat
	3.5	10.02	16.80	1.32	62.17

6 TRI-N *Blizzard* 24J

PMC824892 | NMF 24JJ | February 12 2021 | White, Polled XX

BW	Adj 205	Adj 365	CE	BW	WW	YW	M	TM	Gen Polled
89	819	1435	9.1	-2.6	49	91	20	44	4

SCR TRIUMPH 2135 (P)

MVY XPLOER 21X (P)

Sire: SCX JEHU 233E (P)

Dam: TRI-N RATIONELLE 546C (P)

SCX MISS MAGNUM 109X (P)

TRI-N RATIONELLE 347A (P)

EPDs top 10% BW, 25% CE, 30% WW and 40% YW

Pictured- Full brother sold to Randy Bryant (MB)

Dam (7 years) and Grand dam (9 years) are still producing. Great grand dam produced until 13 and was a Gold Star Dam and never missed a year.



TRI-N EVERCLEAR 9H - Full Brother

Ultrasound Data	Marbling	Backfat (mm)	REA (in2)	Weight adj REA	%Lean Meat
	4.5	7.62	14.20	1.16	62.50

Jehu sons



EPDs 20% WW TM, 25% YW, 35% BW and 40% CW

Same cow family as lot 3

Grand Dam produced until she was 14 (Gold Star Dam) and never missed a calving.

Maternal sister sold to AYG Charolais (QC).

Turns a year old 3 days before the sale.

7 TRI-N *Cold Mexico* 118J

PMC825004 | NMF 118J | March 18 2021 | White, Homo Polled XX

BW	Adj 205	Adj 365	CE	BW	WW	YW	M	TM	Gen Polled
87	831	1495	6.3	-0.3	52	97	22	48	Homo

SCR TRIUMPH 2135 (P)

MVY XPLOER 21X (P)

Sire: SCX JEHU 233E (P)

Dam: TRI-N CREAMSICLE 657D (P)

SCX MISS MAGNUM 109X (P)

TRI-N CREAMSICLE 85T (P)

Ultrasound Data	Marbling	Backfat (mm)	REA (in2)	Weight adj REA	%Lean Meat
	4.3	10.48	14.03	1.15	59.44

8 TRI-N *Frosty* 23J

PMC828587 | NMF 23J | February 12 2021 | White, Polled XX

BW	Adj 205	Adj 365	CE	BW	WW	YW	M	TM	Gen Polled
96	826	1455	6.0	-0.5	50	100	16	41	4

SCR TRIUMPH 2135 (P)

RAMM WHISTLER 8W (P)

Sire: SCX JEHU 233E (P)

Dam: RAMM CUTIE 119C (P)

SCX MISS MAGNUM 109X (P)

BAR J 127U (P)

EPDs top 20% YW, 25% WW, 30% REA, 35% BW Marb and 40% CW

Only thing missing is this bulls ears! Top top bull.

Maternal sister was a high selling bred cow to Highway 21 Feeders (AB)

Ultrasound Data	Marbling	Backfat (mm)	REA (in2)	Weight adj REA	%Lean Meat
	3.7	6.22	16.09	1.23	65.47

9 TRI-N *Canadian Dream* 64J

PMC818101 | NMF 64J | February 24 2021 | White, Homo Polled XX

BW	Adj 205	Adj 365	CE	BW	WW	YW	M	TM	Gen Polled
90	898	1435	9.4	-2.7	51	90	20	45	Homo

SCR TRIUMPH 2135 (P)

MVY XPLOER 21X (P)

Sire: SCX JEHU 233E (P)

Dam: TRI-N MARLENE 403B (P)

SCX MISS MAGNUM 109X (P)

TRI-N-MARLENE 408P (P)

EPDs top 10% BW, 20% CE, 25% WW and 40% YW TM

Dam was a high seller to Shephard Charolais (IA) and is one of the nicest cows you will find.

-Full brother sold to Lynn Cattle Co (SK) last year

Ultrasound Data	Marbling	Backfat (mm)	REA (in2)	Weight adj REA	%Lean Meat
	4.0	7.14	15.08	1.21	63.71

EPDS top 20% TM, 25% YW M and REA, 30% CE, 35% BW and CW and 40%WW and Marb

Turns a year old 10 days prior to sale.

Full sister sold to Highway 21 Feeders(AB)

5 straight generations of Gold star Dams (945W, 37S, 401P, 244M and 27H). 945W and 37S has been sold to Texas A+M University at 13 and 16 years old to highlight their ET Program. 401P produced until 17, 244M until 15 and 27H was 14 when she finished her career here.



TRI-N PRAIRIE ROSEBUD 49H - Full Sister

10 TRI-N *Canadian Pride* 107J

PMC818089 | NMF 107J | March 11 2021 | White, Homo Polled XX

BW	Adj 205	Adj 365	CE	BW	WW	YW	M	TM	Gen Polled
90	848	1396	8.5	-0.2	47	98	24	48	Homo

SCR TRIUMPH 2135 (P)

SOS CRIMSON TIDE 97S (P)

Sire: SCX JEHU 233E (P)

Dam: TRI-N PRAIRIE ROSEBUD 945W (P)

SCX MISS MAGNUM 109X (P)

TRI-N-PRAIRIE ROSEBUD37S (P)

Ultrasound Data	Marbling	Backfat (mm)	REA (in2)	Weight adj REA	%Lean Meat
	3.3	3.81	15.27	1.34	67.26

11 TRI-N *Fifty Below* 106J

PMC824988 | NMF 106J | March 10 2021 | White, Homo Polled XX

BW	Adj 205	Adj 365	CE	BW	WW	YW	M	TM	Gen Polled
98	830	1446	2.1	1.3	54	108	18	45	Homo

SCR TRIUMPH 2135 (P)

TRI-N PREFIX PLD ET 54Y (P)

Sire: SCX JEHU 233E (P)

Dam: TRI-N MISS MELANIE 329A (P)

SCX MISS MAGNUM 109X (P)

CHARHEAD MISS 23R (P)

EPDs top 10% YW, 15% WW CW, 30% REA and 40% TM

Turns a year old 11 days before sale.

-Dam producing still at 9, Grand dam until 10.

Ultrasound Data	Marbling	Backfat (mm)	REA (in2)	Weight adj REA	%Lean Meat
	4.6	7.17	15.13	1.23	63.71

12 TRI-N *Cow-Town* 136J

PMC824916 | NMF 136J | April 10 2021 | White, Homo Polled XX

BW	Adj 205	Adj 365	CE	BW	WW	YW	M	TM	Gen Polled
88	883	1467	-0.1	3.5	57	116	19	48	Homo

SCR TRIUMPH 2135 (P)

BEAVER CREEK COUNTRY 261A (P)

Sire: SCX JEHU 233E (P)

Dam: TRI-N NICKHEATA 726E (P)

SCX MISS MAGNUM 109X (P)

TRI-N NICKHEATA PLD 538C (P)

EPD's top 3% YW, 4% CW, 10% WW REA, 20% TM and 25% Marb

Won't turn a year old until 3 weeks after sale.

Same cow family that produced the American National Juniors Res Champ Female

Ultrasound Data	Marbling	Backfat (mm)	REA (in2)	Weight adj REA	%Lean Meat
	4.4	6.67	14.86	1.32	64.01

Jehu sons



EPDs top 15% for WW YW, 30% BW, 35% CW and 40% TM

Outcross tan Jehu son we are offering the industry!! Herd Bull!

Second youngest bull in the sale. Wont be a year old until 3 weeks after sale.

Proven cow family we still have Great Grand Dam (48X) at 12 years (son sells as lot 30)



13 TRI-N *Wheat King* 139J

QPMC824919 | NMF 139J | April 10 2021 | Tan, Polled XX

BW	Adj 205	Adj 365	CE	BW	WW	YW	M	TM	Gen Polled
97	964	1568	5.8	-0.5	53	103	18	45	4

SCR TRIUMPH 2135 (P)

TRI-N CAPTAIN MORGAN 340A (QP)

Sire: SCX JEHU 233E (P)

Dam: TRI-N MISS MELANIE 837F (QP)

SCX MISS MAGNUM 109X (P)

TRI-N MISS MELANIE 589C (QP)

Ultrasound Data	Marbling	Backfat (mm)	REA (in2)	Weight adj REA	%Lean Meat
	4.0	5.75	16.67	1.33	66.42

14 TRI-N *Big Hill* 121J

QPMC824999 | NMF 121J | March 20 2021 | Tan, Homo Polled XX

BW	Adj 205	Adj 365	CE	BW	WW	YW	M	TM	Gen Polled
93	872	1446	7.9	-0.6	47	79	23	46	Homo

SCR TRIUMPH 2135 (P)

OC MR FREE TIME D279 ET (P)

Sire: SCX JEHU 233E (P)

Dam: TRI-N PRAIRIE ROSE 929F (P)

SCX MISS MAGNUM 109X (P)

TRI-N PRAIRIE ROSE 576C (P)

EPDs top 30% for BW TM, 35% CE Milk and 40% YW

Powerful tan Jehu son from the famed Prairie Rose cow family.

Turns a year the day prior to the sale

Ultrasound Data	Marbling	Backfat (mm)	REA (in2)	Weight adj REA	%Lean Meat
	3.5	4.76	15.18	1.35	66.22

15 TRI-N *Bobcaygeon* 147J

PMC828698 | NMF 147J | April 24 2021 | White, Homo Polled XX

BW	Adj 205	Adj 365	CE	BW	WW	YW	M	TM	Gen Polled
98	965	n/a	2.9	1.6	58	112	18	47	Homo

SCR TRIUMPH 2135 (P)

TRI-N CAPTAIN MORGAN 340A (QP)

Sire: SCX JEHU 233E (P)

Dam: TRI-N SASSY PLD 807E (P)

SCX MISS MAGNUM 109X (P)

TRI-N SASSY PLD 59S (P)

EPD's top 5% for WW YW, 15% CW, 25% TM REA and 30% Marb

Youngest bull in the sale with the highest ADJ 205 DW!

Dam has perfect udder

Ultrasound Data	Marbling	Backfat (mm)	REA (in2)	Weight adj REA	%Lean Meat
	3.6	6.22	14.50	1.30	64.18

Einstein sons

EPDs top 30% WW, 35% BW and 40% CE

You won't find a better tan herdbull!!!

Dam has perfect udder and produced
TRI-N Radium 8109F



TRI-N RADIUM 8109F - Maternal Brother
and sire to Lots 38 & 39



Ultrasound Data	Marbling	Backfat (mm)	REA (in2)	Weight adj REA	%Lean Meat
	4.0	7.14	14.23	1.18	63.01



16 TRI-N Dutton 2118J

QPMC824925 | NYK 2118J | February 15 2021 | Tan, Homo Polled

XX

BW	Adj 205	Adj 365	CE	BW	WW	YW	M	TM	Gen Polled
90	881	1342	7.0	-0.3	49	89	16	41	Homo

HEJ CHESTER 1C (P)

TRI-N CAPTAIN MORGAN 340A (QP)

Sire: HEJ EINSTEIN 28E (P)

Dam: TRI-N LADY TIME 124D (QP)

HEJ CATALINA SUNRISE 68C (P)

TRI-N LADY TIME 912W (QP)

RS HEJ Einstein 28E

CE 9.5 BW -1.2 WW 45 YW 88 M 16 TM 39

Homo Polled, Red Factor 5 sons on offer Lots 16-20

Tried and true! This is the 3rd year we have marketed Einstein sons and they have consistently been in demand by commercial and purebred breeders alike. The amount of length, hair, hip, and performance in Einstein is phenomenal. With his smooth shoulders and small head, he calves extremely well too. They say a picture is worth 1000 words, and Einstein's picture describes him perfectly! We unfortunately lost Einstein this fall so this is your last chance for a son!



Einstein sons

17 TRI-N Doctor Who 87J

QPMC824915 | NMF 87J | March 05 2021 | Tan, Homo Polled X

BW	Adj 205	Adj 365	CE	BW	WW	YW	M	TM	Gen Polled
93	779	1312	10.3	-1.8	49	89	22	46	Homo

HEJ CHESTER 1C (P)

TRI-N CAPTAIN MORGAN 340A (QP)

Sire: HEJ EINSTEIN 28E (P)

Dam: TRI-N PRAIRIE ROSEBUD 769E (QP)

HEJ CATALINA SUNRISE 68C (P)

TRI-N-PRAIRIE ROSEBUD375 QP

EPDs top 30% for BW TM, 35% CE Milk and 40% YW

Grand Dam still producing at 10. Great Grand Dam produced until 14.

Lots of calving ease - recommended for medium to large framed heifers or cows

Ultrasound Data	Marbling	Backfat (mm)	REA (in2)	Weight adj REA	%Lean Meat
	3.9	3.33	14.21	1.33	66.89



19 TRI-N Doc 98J

QPMC824922 | NMF 98J | March 09 2021 | Homo Red (Non-Diluter), Polled XX

BW	Adj 205	Adj 365	CE	BW	WW	YW	M	TM	Gen Polled
91	909	1463	6.8	0.7	48	87	23	47	4

HEJ CHESTER 1C (P)

TWN WHISTLER 44W (QP)

Sire: HEJ EINSTEIN 28E (P)

Dam: TRI-N PRAIRIE ROSE 394A (QP)

HEJ CATALINA SUNRISE 68C (P)

TRI-N PRAIRIE ROSE 102Y (QP)

18 TRI-N Smarty Pants 57J

QPMC825006 | NMF 57J | February 23 2021 | White, Homo Polled XX

BW	Adj 205	Adj 365	CE	BW	WW	YW	M	TM	Gen Polled
90	863	1361	7.6	0.2	49	89	15	40	Homo

HEJ CHESTER 1C (P)

TRI-N CAPTAIN MORGAN 340A (QP)

Sire: HEJ EINSTEIN 28E (P)

Dam: TRI-N CREAMSICLE 781E (P)

HEJ CATALINA SUNRISE 68C (P)

TRI-N CREAMSICLE 1018X (P)

EPDS top 30% WW, 35% CE and 40% BW

Top calf that was too shy picture day. Be sure to watch his video!

Grand Dam still producing at 12 years. Great Grandma produced until 14 and calved every year and was a Gold Star Dam

Ultrasound Data	Marbling	Backfat (mm)	REA (in2)	Weight adj REA	%Lean Meat
	3.7	3.79	15.23	1.32	67.25

EPDs top 25% TM, 30% milk, 35 YW and 40% CE

Top bull from the famed Prairie Rose cow family that produced the highest milk EPD in Canadian Charolais history. Generations of Gold Star dams.

Keep every daughter off this bull!!



TRI-N PRAIRIE ROSE 394A - Dam



TRI-N PRAIRIE ROSE 109H - Maternal sister

Ultrasound Data	Marbling	Backfat (mm)	REA (in2)	Weight adj REA	%Lean Meat
	4	4.29	16.39	1.31	67.69

Einstein/Red Baron sons

Customer Testimonial

"We run a herd of mainly Hereford x in Northern BC. We started using Tri-N bulls a couple years ago and have had nothing but great luck. The consistency they throw is unparalleled in the industry! The bulls weather our northern winters without problem and don't take a lot of babying or extra maintenance. Their calves are hardy and have a lot of get up and go. We've been complimented many times on our calves at the auction mart and have had people stop in just to see the "Manitoba bulls". We come back year after year because it makes sense!!."

~Cody and Ashley Pugh- Cecil Lake BC~

20 TRI-N *Professor* 2150J

QPMC824924 NYK 2150J February 28 2021 Tan, Homo Polled										XX
BW	Adj 205	Adj 365	CE	BW	WW	YW	M	TM	Gen Polled	
105	906	1492	8.7	-0.2	43	82	22	44	Homo	

HEJ CHESTER 1C (P) WRANGLER ON FIRE 49T (QP)
 Sire: **HEJ EINSTEIN 28E (P)** Dam: **CHARHEAD MISS MEL 38Y (QP)**
 HEJ CATALINA SUNRISE 68C (P) MEL MS CHACONNE 14T (QP)

EPDs top 25% CE, 35% BW and 40% milk

Top tan bull that was too shy picture day. Purebred or commercial quality.

Dam is a foundation dark red 11 year old cow for Jesse that's produced 9 good ones in a row

Ultrasound Data	Marbling	Backfat (mm)	REA (in2)	Weight adj REA	%Lean Meat
	3.7	5.27	15.41	1.19	65.88

RS TRI-N *Red Baron* 765E

CE 12.7 BW -5.2 WW 48 YW 84 M 14 TM 38

Homo Polled, Homo Red (Non-Diluter)
 10 sons on offer Lots 21-30



Red Baron 2 year-old daughter udder



EPDs top 2% BW, 5% CE, 25% Marb and 35% WW

Our 10th (TENTH!) year marketing the Captain Morgan influence!! No guess work here about how this bloodline works! Are we excited that next year will be year 11? You bet! Generations of strong cow families and solid herd bulls make up the lineage of Red Baron. As we owned his sire and grand sire (both served the test of time here) it was only fitting to retain Red Baron to walk in their footsteps 5 years ago.

Claimed by many visitors here as one of the soundest footed red herdsires you will find, Red Baron has stood the test of time. His sons have been extremely marketable over the years with their first-class calving ease, while still maintaining performance and that nice red color.

His daughters are proving themselves as being great producers, in not only our herd, but others throughout North America that were sold in the "Changing of the Guard" sale in December. If you are ever in the area, make sure to stop by and see Red Barons dam... she is 13 but a bull wouldn't know she was over 6!!

Once again, we are excited to offer you another strong set of herd bulls off this proven bull!

Red Baron sons



EPDs top 25% fat and 35% BW.

Purebred or commercial quality bull that I thought about keeping.

Dam and grand dam are still producing at 9 and 12 years old. Great udders and feet.

Recommended for medium to large framed heifers or cows

21 TRI-N *Jim Brown* 5J

QPMC824995 | NMF 5J | February 07 2021 | Homo Red (Non-Diluter), Homo Polled X

BW	Adj 205	Adj 365	CE	BW	WW	YW	M	TM	Gen Polled
82	808	1316	5.6	0.3	39	80	19	38	Homo

TRI-N CAPTAIN MORGAN 340A (QP)

PLESANT DAWN BONUS 601X (QP)

Sire: TRI-N RED BARON 765E (QP)

Dam: TRI-N MISS MELANIE 320A (QP)

TRI-N MISS CHARHEAD 917W (QP)

MISS CHARHEAD 48X (QP)

Ultrasound Data	Marbling	Backfat (mm)	REA (in2)	Weight adj REA	%Lean Meat
	4.5	8.10	13.65	1.12	61.57

22 TRI-N *Tradition* 76J

QPMC824981 | NMF 76J | March 01 2021 | Tan, Homo Polled X

BW	Adj 205	Adj 365	CE	BW	WW	YW	M	TM	Gen Polled
91	872	1326	11.1	-1.0	50	90	22	47	Homo

TRI-N CAPTAIN MORGAN 340A (QP)

MVY XPLORER 21X

Sire: TRI-N RED BARON 765E (QP)

Dam: TRI-N SALLY 406B (QP)

TRI-N MISS CHARHEAD 917W (QP)

TRI-N SALLY 1004X (QP)

EPDs top 10% CE, 25% BW WW and TM, 40% YW and 45% milk

Nice tan bull whose dam produced a herd bull for MRF Charolais (QC) last year.

Has a picture perfect 8 year old dam. Come visit and see if you can find a fault on her (I will pay the fuel if you do)!!

Recommended for medium to large framed heifers or cows.



TRI-N SALLY 406B - Dam

Ultrasound Data	Marbling	Backfat (mm)	REA (in2)	Weight adj REA	%Lean Meat
	4.5	8.1	15.27	1.35	62.88

Red Baron sons

EPDs top 10% Marb, 20% BW, 25% CE, 40% YW Fat and 50% WW

Outstanding red bull off a perfect uddered, donor quality 11 year-old cow. Grand dam is still producing at 13. Great Grand Dam produced until 11.

Maternal sister was a lead off bred heifer and sold to Oberle Circle 7 Ranches (SK)



TRI-N SALLY 66H - Maternal Sister

23 TRI-N *Ray Lewis* 18J

QPMC824899 | NMF 18J | February 11 2021 | Homo Red (Non-Diluter), Homo Polled X

Ultrasound Data	Marbling	Backfat (mm)	REA (in2)	Weight adj REA	%Lean Meat
	4.5	7.62	15.64	1.12	63.67

BW	Adj 205	Adj 365	CE	BW	WW	YW	M	TM	Gen Polled
87	895	1506	8.9	-1.7	45	90	18	41	Homo

TRI-N CAPTAIN MORGAN 340A (QP)

TRI-N TIDAL WAVE 960W (QP)

Sire: TRI-N RED BARON 765E (QP)

Dam: TRI-N SALLY 135Y (QP)

TRI-N MISS CHARHEAD 917W (QP)

TRI-N SALLY 934W (QP)

24 TRI-N *Dan Marino* 80J

QPMC825003 | NMF 80J | February 20 2021 | Homo Red (Non-Diluter), Polled X

BW	Adj 205	Adj 365	CE	BW	WW	YW	M	TM	Gen Polled
85	926	1460	13.3	-5.4	47	75	18	41	4

TRI-N CAPTAIN MORGAN 340A (QP)

MVY XPLORER 21X (P)

Sire: TRI-N RED BARON 765E (QP)

Dam: TRI-N KOREEN 463B (QP)

TRI-N MISS CHARHEAD 917W (QP)

TRI-N-KOREEN 410P (QP)

EPDs top 2% BW, 4% CE and 40% WW

Great cow family. Grand Dam produced until 12.

Maternal sister sold to Highway 21 Feeders (AB)

Recommended for medium to large framed heifers or cows

Ultrasound Data	Marbling	Backfat (mm)	REA (in2)	Weight adj REA	%Lean Meat
	4.5	7.64	15.40	1.20	63.45

25 TRI-N *Barry Sanders* 82J

QPMC830567 | NMF 82J | March 03 2021 | Homo Red (Non-Diluter), Homo Polled X

BW	Adj 205	Adj 365	CE	BW	WW	YW	M	TM	Gen Polled
83	913	1379	11.7	-3.7	46	78	20	43	Homo

TRI-N CAPTAIN MORGAN 340A (QP)

PRO-CHAR CPTN. MORGAN 8U (QP)

Sire: TRI-N RED BARON 765E (QP)

Dam: TRI-N PRAIRIE ROSE 183Z (QP)

TRI-N MISS CHARHEAD 917W (QP)

TRI-N-PRAIRIE ROSE 401P (QP)

EPDs top 5% BW, 10% CE and 45% WW

Perfect uddered 10 year old dam. Lots of longevity. Grand dam 401P (produced until 17), 244M (produced until 15) and 27H (produced until 14). All Gold Star Dams.

Recommended for medium to large framed heifers or cows

Ultrasound Data	Marbling	Backfat (mm)	REA (in2)	Weight adj REA	%Lean Meat
	3.5	6.22	14.21	1.19	63.94

Red Baron sons



EPDs top 10% BW and Marb, 15% CE and 55% YW

Maternal sisters sold to CS Cattle (AZ) and Desertland Cattle (AB)

Powerful bull off a powerful cow that will be entering our ET program at 11 years.

Recommended for medium to large framed heifers or cows

26 TRI-N *Walter Payton* 66J

QPMC818094 | NMF 66J | February 26 2021 | Homo Red (Non-Diluter), Polled X

BW	Adj 205	Adj 365	CE	BW	WW	YW	M	TM	Gen Polled
89	852	1474	10.6	-2.4	41	85	21	41	4

TRI-N CAPTAIN MORGAN 340A (QP)

SOS CRIMSON TIDE 97S (P)

Sire: TRI-N RED BARON 765E (QP)

Dam: TRI-N BUFFY 63Y (QP)

TRI-N MISS CHARHEAD 917W (QP)

TRI-N BUFFY II 51S (QP)

Ultrasound Data	Marbling	Backfat (mm)	REA (in2)	Weight adj REA	%Lean Meat
	3.8	3.33	15.69	1.26	68.09



TRI-N BUFFY 1002G - Maternal sister



TRI-N BUFFY 46H - Maternal sister

27 TRI-N *Dan Marino* 70J

QPMC824980 | NMF 70J | February 27 2021 | Homo Red (Non-Diluter), Polled X

BW	Adj 205	Adj 365	CE	BW	WW	YW	M	TM	Gen Polled
85	798	1459	9.5	-2.0	46	84	14	37	4

TRI-N CAPTAIN MORGAN 340A (QP)

TRI-N CAPTAIN MORGAN 340A (QP)

Sire: TRI-N RED BARON 765E (QP)

Dam: TRI-N NICKHEATA 612D (QP)

TRI-N MISS CHARHEAD 917W (QP)

TRI-N NICKHEATA PLD 160Z (QP)

EPDs top 15% BW, 20% CE and 45% WW

Full sister sold to Ethan Smith Farms (IA). Very nice calving ease bull that traces back to a cow dad bought from my uncle Len in 1987. Top pick. Lots of hair, style and shape off a proven cow family. Be sure to watch his video!

Recommended for medium to large framed heifers or cows.

Ultrasound Data	Marbling	Backfat (mm)	REA (in2)	Weight adj REA	%Lean Meat
	4.8	8.10	15.27	1.25	62.88

28 TRI-N *Tom Brady* 2173J

QPMC824910 | NYK 2173J | March 31 2021 | Homo Red (Non-Diluter), Homo Polled XX

BW	Adj 205	Adj 365	CE	BW	WW	YW	M	TM	Gen Polled
99	946	1352	8.2	-1.4	40	77	18	38	Homo

TRI-N CAPTAIN MORGAN 340A (QP)

SOS CRIMSON TIDE 97S

Sire: TRI-N RED BARON 765E (QP)

Dam: TRI-N LADY RAVEN 82Y (QP)

TRI-N MISS CHARHEAD 917W (QP)

JMK LADY RAVEN 7J

EPDs top 20% BW and 30% CE Marb

Wont be a year old until 10 days after the sale. Nice cherry red bull off a 11 year old dam and a grand dam that produced until 14.

Maternal sister was sold to Triple C Charolais (MB)

Ultrasound Data	Marbling	Backfat (mm)	REA (in2)	Weight adj REA	%Lean Meat
	4.4	4.76	12.90	1.2	64.37

Red Baron sons

29 TRI-N Warren Moon 2155J

QPMC827570 | NYK 2155J | March 01 2021 | Homo Red (Non-Diluter), Homo Polled X

BW	Adj 205	Adj 365	CE	BW	WW	YW	M	TM	Gen Polled
89	883	1350	11.7	-3.7	50	88	16	41	Homo

TRI-N CAPTAIN MORGAN 340A (QP)

TRI-N CAPTAIN MORGAN 340A (QP)

Sire: TRI-N RED BARON 765E (QP)

Dam: TRI-N LADY RAVEN 5160E (QP)

TRI-N MISS CHARHEAD 917W (QP)

TRI-N LADY RAVEN 64Y (QP)

EPDs top 5% BW, 10% CE, 25% WW, 30% Marb and 45% YW

The darkest bull we have raised.. almost black!! Dam and grand dam still producing in our herd. Great maternal cow family with lots of calving ease.

Recommended for medium to large framed heifers or cows

Ultrasound Data	Marbling	Backfat (mm)	REA (in2)	Weight adj REA	%Lean Meat
	4.8	6.67	14.59	1.29	63.79



30 TRI-N Steve Young 61J

MC824911 | NMF 61J | February 24 2021 | Homo Red (Non-Diluter), Homo Polled XX

BW	Adj 205	Adj 365	CE	BW	WW	YW	M	TM	Gen Polled
96	932	1374	9.0	-2.7	45	80	17	40	Homo

TRI-N CAPTAIN MORGAN 340A (QP)

WRANGLER ON FIRE 49T (QP)

Sire: TRI-N RED BARON 765E (QP)

Dam: MISS CHARHEAD 48X (QP)

TRI-N MISS CHARHEAD 917W (QP)

CHARHEAD MISS 33T (QP)

EPDs top 10% BW, 25% CE and 50% WW

Calving ease dark red bull off a very nice 12 year cow purchased from the Charhead dispersal

Ultrasound Data	Marbling	Backfat (mm)	REA (in2)	Weight adj REA	%Lean Meat
	4.2	6.67	4.65	1.19	63.84



RS JACK Foundation 7F

CE 4.9 BW 0.9 WW 43 YW 74 M 24 TM 45

Homo Polled, Homo Red (Non-dilutor)

5 sons on offer Lots 31-35

Purchased from Bremner Charolais of Dauphin, MB. Jack Foundation is a bull that started from the bottom and moved to the top. A bull that started his career on commercial cows before he saw heavy use in the purebred division. Foundations first calf crop passed the test! He calves extremely well and is a true herd bull. His heifer calves and service saw great demand in our "Changing of the Guard" Female sale in December. A bull that has a bright future here.



Foundation sons



EPDs top 15% for BW, 25% CE and 45% WW

“Big Jack” has been Delaneys pride and joy since birth.

Possibly the longest and deepest dark red bull in the pen.. a rare combination!

Same cow family as lot 16. A cow family that needs little introduction.

31 TRI-N *Big Jack* 2104J

QPMC824917 | NYK 2104J | February 01 2021 | Homo Red (Non-Diluter), Homo Polled **XX**

BW	Adj 205	Adj 365	CE	BW	WW	YW	M	TM	Gen Polled
91	928	1510	8.8	-2.1	46	80	19	42	Homo

PRO-CHAR YELLOW JACKET 6C (P)

TRI-N CAPTAIN MORGAN 340A (QP)

Sire: JACK FOUNDATION 7F (QP)

Dam: TRI-N LADY TIME 8106F (QP)

BREMNERS BRITTANY 348Y (QP)

TRI-N LADY TIME 215A (QP)

Ultrasound
Data

Marbling	Backfat (mm)	REA (in2)	Weight adj REA	%Lean Meat
3.7	5.71	16.50	1.27	66.32



32 TRI-N *Flutie* 17J

QPMC824991 | NMF 17J | February 11 2021 | Homo Red (Non-Diluter), Polled **XX**

BW	Adj 205	Adj 365	CE	BW	WW	YW	M	TM	Gen Polled
92	758	1326	4.2	1.5	46	80	20	43	4

PRO-CHAR YELLOW JACKET 6C (P)

TRI-N CAPTAIN MORGAN 340A (QP)

Sire: JACK FOUNDATION 7F (QP)

Dam: TRI-N LADY RAVEN 825F (QP)

BREMNERS BRITTANY 348Y (QP)

TRI-N LADY RAVEN 179Z (QP)

Cherry Red bull whose great grand dam produced until 14 and dam and grand dam are still in production. Will produce excellent females and a great choice for unsupervised calving pastures.

Recommended for medium to large framed heifers or cows

Ultrasound
Data

Marbling	Backfat (mm)	REA (in2)	Weight adj REA	%Lean Meat
4.1	4.76	15.34	1.33	66.35

33 TRI-N *Calvillo* 14J

QPMC824985 | NMF 14J | February 10 2021 | Homo Red (Non-Diluter), Polled XX

BW	Adj 205	Adj 365	CE	BW	WW	YW	M	TM	Gen Polled
94	920	1446	4.3	1.6	43	83	22	43	4

PRO-CHAR YELLOW JACKET 6C (P)

TRI-N CAPTAIN MORGAN 340A (QP)

Sire: JACK FOUNDATION 7F (QP)

Dam: TRI-N MISS MELANIE 674D (QP)

BREMERS BRITTANY 348Y (QP)

TRI-N MISS MELANIE 320A (QP)

Top bull off quite arguably the nicest dark red cow on the ranch by visitors have commented.

Same cow family as lot 21 - Dam (6 years), grand dam (9 years) and great grand dam (12 years) are still in production.

Ultrasound Data	Marbling	Backfat (mm)	REA (in2)	Weight adj REA	%Lean Meat
	4.6	8.10	16.80	1.24	64.13



34 TRI-N *Reed* 58J

QPMC824901 | NMF 58J | February 23 2021 | Homo Red (Non-Diluter), Polled XX

BW	Adj 205	Adj 365	CE	BW	WW	YW	M	TM	Gen Polled
92	896	1433	5.9	1.0	48	86	22	46	2

PRO-CHAR YELLOW JACKET 6C (P)

TRI-N CAPTAIN MORGAN 340A (QP)

Sire: JACK FOUNDATION 7F (QP)

Dam: TRI-N SALLY 501C (QP)

BREMERS BRITTANY 348Y (QP)

TRI-N SALLY 415 (QP)

EPDs top 30% TM and 35% WW

Traces back to Dad's first purebred cow he bought in 1984 (Miss DTM 18L). Purchased from Dennis Toms of Redvers, SK.

Top cow family with some of our most predictable genetics mixed in. Grand dam produced until 11 and great grand dam produced until 12 while never missing a year.

Ultrasound Data	Marbling	Backfat (mm)	REA (in2)	Weight adj REA	%Lean Meat
	3.6	3.86	14.69	1.18	66.75



35 TRI-N *Galveston* 91J

QPMC816936 | NMF 91J | March 05 2021 | Homo Red (Non-Diluter), Polled X

BW	Adj 205	Adj 365	CE	BW	WW	YW	M	TM	Gen Polled
90	840	1236	7.6	-0.9	47	79	23	47	4

PRO-CHAR YELLOW JACKET 6C (P)

TRI-N CAPTAIN MORGAN 340A (QP)

Sire: JACK FOUNDATION 7F (QP)

Dam: TRI-N MARLENE 604D (QP)

BREMERS BRITTANY 348Y (QP)

TRI-N MARLENE 72T (QP)

EPDs top 25% BW, 30% milk, 35% CE and 40% YW

Dam was a feature in our female sale and sold to Bina Charolais (ND). Maternal sisters working at C-B Charolais (ND) and Jayshaw Charolais (AB).

Grandma (72T) was a Gold Star Dam of Distinction and produced until 14.

Recommended for medium to large framed heifers or cows

Ultrasound Data	Marbling	Backfat (mm)	REA (in2)	Weight adj REA	%Lean Meat
	4.2	3.33	14.07	1.36	66.78



Merv's Brothers



The Nykoliation "kids"

B&L Dark Horse sons



EPDS top 10% for CE BW, 15% WW, 25% TM and 30% YW

Raised by a first calf heifer..wow!!

Dam is working at AYG Charolais (QC)

Same cow family that produced Jacks Foundation. Grand dam was a Gold Star Dam and produced until 14. Great grand dam was a Gold Star Dam and produced until 13

36 TRI-N *Spartan* 2141J

QPMC818078 | NMF 2141J | February 26 2021 | Tan, Homo Polled XX

BW	Adj 205	Adj 365	CE	BW	WW	YW	M	TM	Gen Polled
82	931	1510	11.1	-2.8	53	94	20	47	Homo

HRJ BULLETPROOF 411B (QP)

TRI-N RED BARON 765E (QP)

Sire: B&L DARK HORSE 27G (QP)

Dam: TRI-N RATIONELLE 9429G (QP)

KLD24C (P)

TRI-N RATIONELLE 97T (P)



B&L Dark Horse 27G - Sire

Ultrasound Data	Marbling	Backfat (mm)	REA (in2)	Weight adj REA	%Lean Meat
	4.5	5.71	16.10	1.29	65.99



37 TRI-N *Stallion* 2165J

QPMC824914 | NMF 2165J | March 20 2021 | Tan, Polled X

BW	Adj 205	Adj 365	CE	BW	WW	YW	M	TM	Gen Polled
93	897	1345	5.3	0.8	40	78	17	37	4

HRJ BULLETPROOF 411B (QP)

SOS CHUCK WAGON 54C (P)

Sire: B&L DARK HORSE 27G (QP)

Dam: TRI-N DOLCE 9415G (P)

KLD24C (P)

BAKER FARMS DOLCE 4D (P)

EPDs top 30% for REA and fat

Great job by a first calf heifer!

Won't be a year old until the day before the sale.

Grand dam was Canadian National Heifer Calf Champion

Ultrasound Data	Marbling	Backfat (mm)	REA (in2)	Weight adj REA	%Lean Meat
	4.1	3.81	13.43	1.3	65.77

Radium & Chisum sons

38 TRI-N *Marbler* 2132J

REG APP | NMF 2132J | February 20, 2021 | Homo Red (Non-Diluter), Homo Polled X

BW	Adj 205	Adj 365	CE	BW	WW	YW	M	TM	Gen Polled
83	715	1442	7.3	0.3	46	82	23	46	Homo

MXS LET IT ROLL 686D (QP)

TRI-N CAPTAIN MORGAN 340A (QP)

Sire: TRI-N RADIUM 8109F (QP)

Dam: TRI-N PRAIRIE ROSEBUD 816F (QP)

TRI-N LADYTIME 124D (QP)

TRI-N-PRAIRIE ROSEBUD37S (QP)

Highest marbling bull in the sale.

From the famed Prairie Rose cow family. Grand dam, great grand dam, great great grand dam and great great great grand dam are all Gold Star Dams of Distinction and produced until 15(still going), 17, 15 and 14 years old.

Recommended for medium to large framed heifers or cows

Ultrasound Data	Marbling	Backfat (mm)	REA (in2)	Weight adj REA	%Lean Meat
	5.5	4.29	14.97	1.29	66.53



39 TRI-N *Easy Sleeper* 2162J

REG APP | NMF 2162J | March 14, 2021 | Homo Red (Non-Diluter), Homo Polled X

BW	Adj 205	Adj 365	CE	BW	WW	YW	M	TM	Gen Polled
80	814	1396	6.1	0.1	35	67	20	37	Homo

MXS LET IT ROLL 686D (QP)

PRO-CHAR CPTN. MORGAN 8U (QP)

Sire: TRI-N RADIUM 8109F (QP)

Dam: TRI-N MISS CHARHEAD 170Z (QP)

TRI-N LADYTIME 124D (QP)

TRI-N MISS CHARHEAD 917W (QP)

Great for unsupervised calving pastures if you have some heifers or cows to breed.

Excellent maternal tracing back to the same cow family as Red Baron.

Recommended for medium to large framed heifers or cows

Ultrasound Data	Marbling	Backfat (mm)	REA (in2)	Weight adj REA	%Lean Meat
	4.5	5.24	12.90	1.14	63.87

2020 Manitoba Charolais Association Commercial Breeders of the Year



W5 Farms - Darcy and Parker Watson
Rossendale, MB

*Congrats to the Watson family on your award!
We really appreciate the support you have
given us the past decade!*

40 TRI-N *Captain Chisum* 2157J

REG APP | NMF 2157J | March 6, 2021 | White, Polled XX

BW	Adj 205	Adj 365	CE	BW	WW	YW	M	TM	Gen Polled
97	790	1361	5.4	0.7	57	110	26	54	2

EATONS BIG BUD 10402 P (P)

TRI-N-PAYDAY 419P (P)

Sire: PLEASANT DAWN CHISUM 216A (P)

Dam: TRI-N BUFFY 79T (P)

PLEASANT DAWN MAGGIE 316X (P)

TRI-N BUFFY 6R (P)

Maternal brother to the great TRI-N Captain Morgan 340A! Dam is still producing at 15 and by the look of her I think she can go another 15 years!

Maternal brothers working for Gerald Black (MB), Kermit Schiele (ND), TRI-N/Doll Charolais (ND), Nielson Bros (MO), Wilgenbusch Charolais (SK), Beery Ranch (MT) and DUCHSHERER GRAIN & LIVESTOCK (ND). Maternal sister was a feature in female sale selling to 7 Quarter Circle Charolais (AB)

Ultrasound Data	Marbling	Backfat (mm)	REA (in2)	Weight adj REA	%Lean Meat
	4.5	3.33	12.71	1.15	65.67



Icon, Focus & Gualtieri sons



41 TRI-N *Iconic* 29J

PMC818083 | NMF 29J | February 15 2021 | White, Homo Polled XX

BW	Adj 205	Adj 365	CE	BW	WW	YW	M	TM	Gen Polled
85	805	1349	5.8	1.4	46	87	18	41	Homo

SOS HOOEY PLD 127D (P)

WRANGLER MAXIMUS 74E (P)

Sire: MCTAVISH ICON 20G (P)

Dam: UNV LADY GLITTER 162G (P)

MCTAVISH FAYE 93E (P)

UNV LADY X 8X (P)

Great job on a heifers first calf!

Dam is working for Cross Country Charolais (MB)

Ultrasound Data	Marbling	Backfat (mm)	REA (in2)	Weight adj REA	%Lean Meat
	4.5	6.19	15.00	1.35	64.61



42 TRI-N *In Focus* 77J

PMC828700 | NMF 77J | March 01 2021 | White, Polled XX

BW	Adj 205	Adj 365	CE	BW	WW	YW	M	TM	Gen Polled
108	686	1264	1.3	3.3	52	96	17	43	3

RGP REMINGTON 101Y (P)

STEPPLERS IDENTITY 90T (P)

Sire: HTA IN FOCUS 721E (P)

Dam: GCT AVIS 67A (P)

STA HOT STUFF 201Z (P)

GCT59X (P)

EPDs top 15% CW, 20% WW, 25% YW and 35% REA and fat

Purchased in dam at the Walking Plow Dispersal

Ultrasound Data	Marbling	Backfat (mm)	REA (in2)	Weight adj REA	%Lean Meat
	4.1	9.07	14.03	1.34	60.89



43 TRI-N *The Great One* 84J

PMC826632 | NMF 84J | March 04 2021 | White, Homo Polled XX

BW	Adj 205	Adj 365	CE	BW	WW	YW	M	TM	Gen Polled
100	781	1345	8.0	-0.4	36	64	25	43	Homo

TR PZC MR TURTON 0794 ET (P)

MVY XPLORER 21X (P)

Sire: PCC GUALTIERI 858F (P)

Dam: TRI-N BUFFY 457B (P)

PRAIRIE COVE MISS 309A (P)

TRI-N BUFFY 953W (P)

EPDs top 15% milk, 30% CE and 35% BW

Long standing cow family that was responsible for producing Captain Morgan

Ultrasound Data	Marbling	Backfat (mm)	REA (in2)	Weight adj REA	%Lean Meat
	4.50	4.76	14.75	1.31	65.87

Customer Testimonial

"We purchased a bull at the Tri-N sale 6 years ago. He's still going strong with no signs of slowing down. We've been using him on our small black cows. We're happy with the calving ease and especially the impressive performance his calves come with. Most of all it's been a blessing to get to know the Nykoliations. Their service and hospitality are exceptional!!."

~The Reimers, Eden, MB~



44 TRI-N Da Vinci 69J

PMC824904 NMF 69J February 27 2021 White, Homo Polled										XX
BW	Adj 205	Adj 365	CE	BW	WW	YW	M	TM	Gen Polled	
98	832	1352	6.7	0.3	39	70	25	45	Homo	

TR PZC MR TURTON 0794 ET (P)

HRJ BULLETPROOF 411B (QP)

Sire: PCC GUALTIERI 858F (P)

Dam: TRI-N MARLENE 729E (P)

PRAIRIE COVE MISS 309A (P)

TRI-N-MARLENE 408P (QP)

EPDs top 15% milk and 30% milk

Maternal sister working for Spruce View Charolais (AB)

Long standing cow family tracing back to Border Corner Astra 1X, purchased in 1988 (the year Jesse was born)!

Ultrasound Data	Marbling	Backfat (mm)	REA (in2)	Weight adj REA	%Lean Meat
	3.6	8.12	13.49	1.18	61.42

2021 Manitoba Charolais Association

Commercial Breeders of the Year

R4 Ranch

Greg, Brenda, Garrett, Daniel,
David Riddell & Families

Pierson, MB

Congrats to the Riddells! We appreciate the support over the years of our program and the Charolais industry!



Customer Testimonial

"We have purchased several red and tan bulls and females from the Nykoliations over the past 6 years. The bulls have put a lot of thickness and performance into our cattle and the females milk well. These bulls have sired great red and tan calves that sell great at the market every year. Thank you Merv and Jesse for allowing us to do this."

~Delvin and Char Walter, Walter's Charolais, Minot, ND ~





TRI-N MALIBU 72B



TRI-N BUFFY 180Z

Breed for females...



TRI-N REBA 561C



TRI-N MARLENE 604D



TRI-N CUTIE 801F



TRI-N MISS MELANIE 852F



TRI-N FRENCH MAID 9423G



TRI-N BUFFY 46H



TRI-N PRAIRIE ROSE43H



TRI-N PRAIRIE ROSE 55H



TRI-N PRAIRIE ROSEBUD 60H



TRI-N PRAIRIE ROSE ET 74H

and the bulls will come!!



TRI-N ELIZA 92H



TRI-N PRAIRIE ROSE 109H



TRI-N CARLA 2448H



TRI-N SALLY 66H



Thank you to our

- | | |
|---------------------------------------|--------------------------------------|
| Challambi Charolais (NSW AUS) | P-N Cattle (TX USA) |
| Force Fields Charolais (NSW AUS) | Alan Clarkin (PEI) |
| CS Cattle (AZ USA) | AYG Charolais (QC) |
| Gulf Coast Cattle (FL USA) | Louber Farms (QC) |
| Ethon Smith Farm (IA USA) | MRF Charolais (QC) |
| Shepherd Charolais (IA USA) | Cornerview Charolais (ON) |
| Nashco Farms Inc (ID USA) | Francrest Farms (ON) |
| Schvaneveldt Charolais (ID USA) | Mckague Charolais (ON) |
| Windin B Cattle (KS USA) | Semex Beef (ON) |
| Noah Weleski (MN USA) | Sunset Stock Co (ON) |
| Zhender Waage Partnership (MN USA) | Thurston Livestock (ON) |
| Cook Charolais (MO USA) | Cline Cattle Co (MB) |
| Old West Ranch (MT USA) | Cross Country Charolais (MB) |
| Bina Charolais (ND USA) | Curtis Lovett (MB) |
| C-B Charolais (ND USA) | Cockerill Farms (MB) |
| Doll Charolais (ND USA) | Don Smith (MB) |
| Duchsherer Grain + Livestock (ND USA) | Gerald Black (MB) |
| Effertz Key Ranch (ND USA) | G+N Elliott Farms Ltd. (MB) |
| Kermit Schiele (ND USA) | Johnston Charolais (MB) |
| Louis Poss (NE USA) | Johnston Charolais Jr, Division (MB) |
| Sonderup Charolais Ranch (NE USA) | KCH Cattle CO (MB) |
| Nielson Bros Charolais (OK USA) | Lee Woloshyn (MB) |
| Brady Mills (SD USA) | Randy Bryant (MB) |
| KCR Charolais (WA USA) | R4 Ranch (MB) |
| Bar J Charolais (TX USA) | Scissors Creek Charolais (MB) |

It's your support that

21 *bidders and buyers...*

Sunblade Charolais (MB)

Sunshine Oak Charolais (MB)

Terry Schuddemat (MB)

Triple C Charolais (MB)

Tyler and Jessica Morrison (MB)

W5 Farms (MB)

Zdan Farms (MB)

Cays Charolais (SK)

Casbar Charolais (SK)

Cedarlea Charolais (SK)

Circle 7 Charolais (SK)

Curtis Longman (SK)

DM Livestock (SK)

Hilltop-View Farms (SK)

Horseshoe E Charolais (SK)

Jack Auction Group (SK)

Kyle and Dani Ringhose-Hobbs(SK)

Lynn Cattle (SK)

Midnight Lake Charolais (SK)

Mills Charolais (SK)

MX Ranch (SK)

Nachewsky Charolais (SK)

Palmer Charolais (SK)

Southland Charolais (SK)

Stephen Charolais (SK)

Terri Cockle (SK)

TLC Ranch (SK)

7 Quarter Circle Charolais (AB)

Bob Charolais (AB)

Briar Ridge Stock Farms (AB)

Cunningham Cattle Co Inc (AB)

Desertland Cattle CO (AB)

Legacy Charolais (AB)

Eureka Valley Charolais (AB)

Highway 21 Feeders (AB)

Jayshaw Charolais (AB)

Johnson Ranching (AB)

Kelvin Wright (AB)

McLeod Livestock (AB)

Peter Heins + Sons Livestock (AB)

Rocky Creek Charolais (AB)

Rosedale Farms (AB)

RT Farms (AB)

Snake Valley Farm (AB)

Spruce View Charolais (AB)

White Lake Colony (AB)

Wrangler Charolais (AB)

Bar B Charolais (BC)

TF Cattle Co. (BC)



keeps us in the business!



Customer Satisfaction...



"We purchased a dark red Captain Morgan son (sight unseen) for our ranch in South Texas for our herd of Brahman cows. We are very impressed with the bull. He slicked off and adapted well to our warm climate. The calves are really impressive and are extremely uniform and beefy. Jesse and Merv know their cattle well and was a pleasure to deal with. Great folks-great cattle. I'd highly recommend their red Charolais bulls on your Brahman cows!!"

~Philip, Nora, James and Stella Drake
P-N Cattle and Hay LLC, Edinburg, TX ~



"We have purchased several bulls over the past years from the Tri-N Bull Sale for our purebred and commercial herd, all sight unseen. We are very satisfied with all of our purchases. The bulls are easy to handle, quiet and sound. Their calves are very vigorous at birth, and the cows calve with ease. Mervin and Jesse do a great job of getting them delivered, even when they have to travel halfway across the country. I would recommend these genetics and their great personalized service any day! Buying a bull here is easy.

Thanks, and keep up the great job guys!"

~Mark and Tamy Frost, MRF Charolais. Kingsey Falls, Quebec~



"3 years ago, we began switching our bull pen to Charolais bulls for the simple fact the tan calves bring a premium in the ring. We have bought several bulls from Jesse and Merv over the past few years (all sight unseen) and found them to be sound, functional and affordable. They cross very well on our angus-based cows by adding thickness and length yet maintaining calving ease. We have been very impressed with the vigour the calves have at birth, they are up and going immediately. Merv and Jesse know their cattle very well and highly recommend their bulls."

~Luke & Jenn Smith and family. Sundre, AB ~



"Adding the Red Factor Charolais to our Red Angus based herd has increased the vigor and growth of our calf crops without giving up calving ease. These calves come out sleek and long bodied and they don't lay around to die. By the time you get the tag written out they are up and sucking. We have been very satisfied with Merv and Jesse's bulls, as they are sound footed and good breeders. They also have very quiet dispositions and are always easy to work with."

~ Ty and Sarah Neidhardt Richardton, ND, USA ~

Terms & Conditions

Terms

All on-site buyers are required to pay by Cheque, Cash, Debit, or by Visa or MasterCard (3% convenience fee on all credit cards) the day of the sale. Internet Buyers and US Buyers will have two (2) business days to wire Canadian Funds to Jack Auction Group for all purchases. All settlements must be made with the sale clerks before cattle will be released. The right of property will not pass until final payment is made.

Bidding

Each animal will sell to the highest bidder. Bidders unable to attend the sale may phone their bids and instructions to the sale manager, auctioneer or special representatives. Bids must be received in sufficient time prior to the sale.

Disputes

Bidding will be re-opened between the parties involved. If no further bid is made, the buyer will be the person from whom the auctioneer accepted the last bid. The auctioneer's decision is final.

Announcements

Announcements made from the block will take precedence over printed matter in the catalog. Buyers are cautioned to pay close attention to announcements.

Purchaser's Risk

Each animal becomes the risk of the purchaser as soon as sold. Animals will be cared for at the purchaser's risk for a reasonable length of time. All animals left with the seller must be insured.

Certificate of Registration

Each animal will carry papers issued by their association unless otherwise stated in the catalog. A certificate of registry duly transferred will be furnished to the buyer after payment has been made.

Delivery

Assistance will be given in making delivery after the sale. The purchaser agrees shipping arrangements will be at the convenience of the seller, but will be as soon as practical after the sale, at the buyer's risk.

Breeder Guarantee

Should any bull fourteen months of age or over, fail to prove a breeder after being used on cows known to be breeders, the matter shall be reported in writing to the seller within six months following the date of purchase or six months after the bull has reached fourteen months of age. The seller has the right and privilege of six months to prove the bull a breeder. No guarantee is given that semen collected from the bull will freeze.

Exception Guarantee

In the case where the animal is subject to any hormonal or surgical reproductive techniques after the sale, this guarantee shall be null and void. The seller is not responsible for damage caused by foreign bodies after the animal has been sold or for sickness not apparent at the sale time. In no event shall the seller be responsible for more than the purchase price.

American Purchases

The sellers will do all health testing for export. Bulls will be delivered to the nearest point of entry at the seller's convenience. All American purchases will be charged additional fees for health testing and delivery as described on page 3. Exchange rates will be announced sale day at current bank rates. All bulls guaranteed exportable to the USA. If you are an American citizen, you do not need a passport to enter Canada. However, you should carry proof of your citizenship (birth certificate, certificate of citizenship or naturalization as well as photo identification). More information is available at www.cbsa-asfc.gc.ca.

Accidents

Although every precaution will be taken to protect the safety and comfort of the buyers, neither the sale manager, auctioneer or sellers assume any responsibility and disclaim any liability, legal or otherwise, in the event of accident or loss of property.

Sale Manager

Jack Auction Group is only acting as a medium between the buyer and seller and is not responsible for failure on the part of either party to live up to their obligations; or for the truth of any warranties or representations, expressed or implied. Any legal action taken in exceptional cases must be between the buyer and seller. The buyer must look to the seller for fulfillment of all guarantees and representations.

Insurance

Insurance will be available sale day.

Pictures

By attending the sale you are granting permission for your picture to be used for promotional and advertising purposes relating to the sale.

Semen

The consignors reserve the right to in-herd semen use on any bull sold in the sale, with semen drawn at the consignor's expense and the buyer's convenience.



Jack Auction Group
Box 1284 Virden, Manitoba R0M 2C0

~ Time Sensitive Material ~



TRI-N *7th Annual* CHAROLAIS BULL SALE

MONDAY, MARCH 21, 2022 - 2 PM - LENORE, MB



*SCX Jehu 233E
15 sons sell!*

